

## **25 Robinson Avenue Girards Hill**

### **Table of Contents**

- | [Property Details](#)
- | [Photo Gallery](#)
- | [Map](#)
- | [Contact For Inspection](#)

## Property Details

25 Robinson Avenue, Girards Hill



SOLD BY THE WAL MURRAY TEAM

4  2  2 

Discover the allure of this unique property nestled in the heart of Girards Hill. This enchanting residence sits on a large, extensively landscaped block, featuring established gardens, meandering pathways, charming sitting areas and a dedicated BBQ space. With ample room for multiple vehicles, including a van, trailer or boat, this home is truly a one of a kind.

The immaculately presented home offers a perfect blend of comfort, style and functionality. With the elevated position, the home captures views over the golf course and to the hills. 4 spacious bedrooms, large open plan living with air-conditioning and a stunning kitchen that has gas cooking, dishwasher plus gorgeous stone bench tops, the kitchen is central and is a true delight.

Flowing outside is the front covered timber deck, which leads through to the BBQ area, firepit and paths around to the extensive established gardens and surrounds. To the eastern side, is the large flat yard space which provides plenty of space to park multiple vehicles/trailer/boat and room for the kids to play.

Underneath the home is the handy utility room, with its own bathroom, kitchenette and separate entry. Perfect for a guest space, office or kids retreat.

The home is complete with a huge garage area for 2+ cars, with high access and heaps of storage room for machinery, camping equipment and much more.

Such an amazing home, this property will surely impress.

- 4 Bedrooms
- 2 Bathrooms
- 2 Garages
- Air Conditioning
- Deck
- Floor boards
- Outdoor Entertaining
- Built In Robes
- Dishwasher

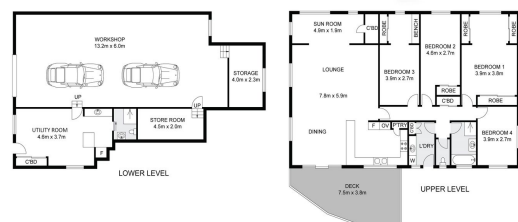
---

**\$899,000**

## Photo Gallery







Dimensions are approximate. All information contained herein gathered from sources we believe to be reliable. However we cannot guarantee its accuracy and interested persons should rely on their own enquiries. © realmedia vision 2024.

INT - 186.9m<sup>2</sup>  
EXT - 22.7m<sup>2</sup>  
WORKSHOP / STORAGE - 94.0m<sup>2</sup>

**25 Robinson Avenue, Girards Hill**

## Map



## Contact For Inspection



### **BENJAMIN CONTE**

LICENSED REAL ESTATE AGENT

---

0408 368 913

[ben@walmurray.com.au](mailto:ben@walmurray.com.au)